



WEST HOUSTON PLAN 2050®
Envisioning Greater West Houston at Mid-Century

West Houston Plan 2050

Envisioning Greater West Houston at Mid-Century

A COMMUNITY CONVERSATION ABOUT GROWTH



The Future of Greater West Houston

- Significant Growth Through 2050

1 Million New Residents

500,000 New Employees

Doubling in Land Area for Development

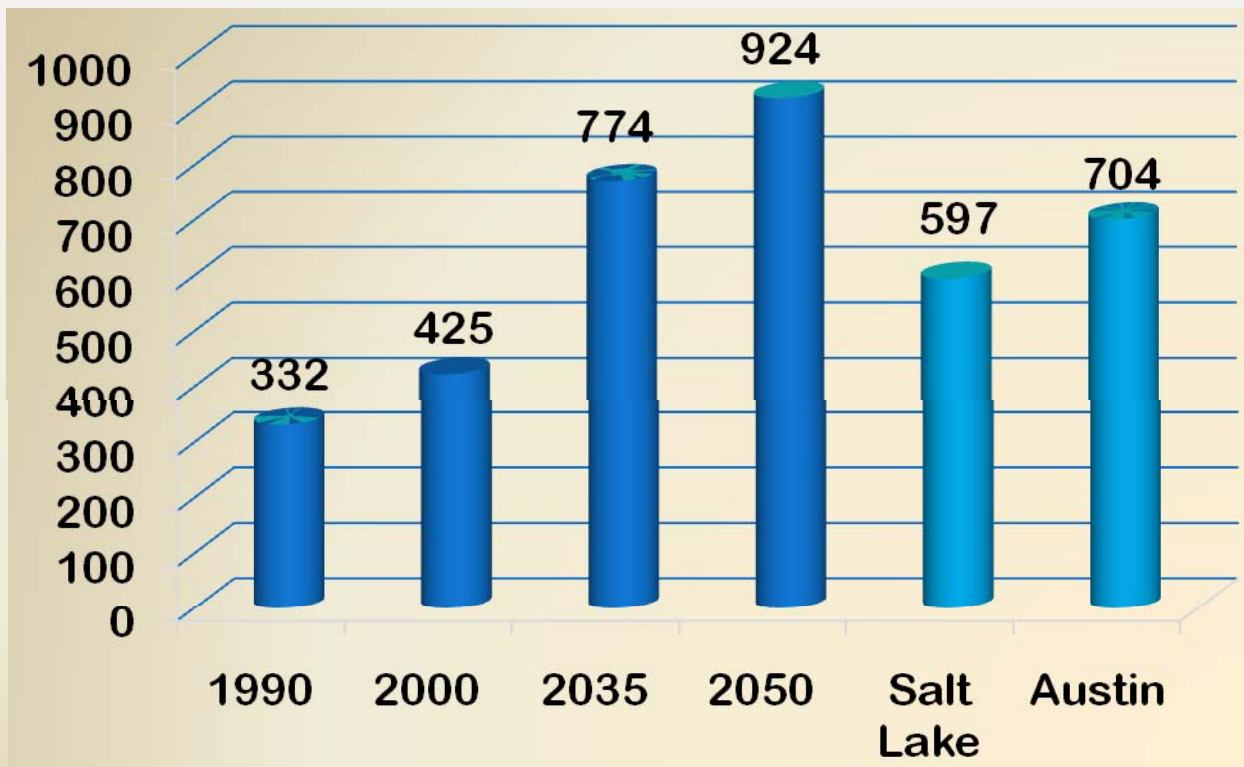
- Building a New City Larger Than Austin



Greater West Houston Population Growth to 2050

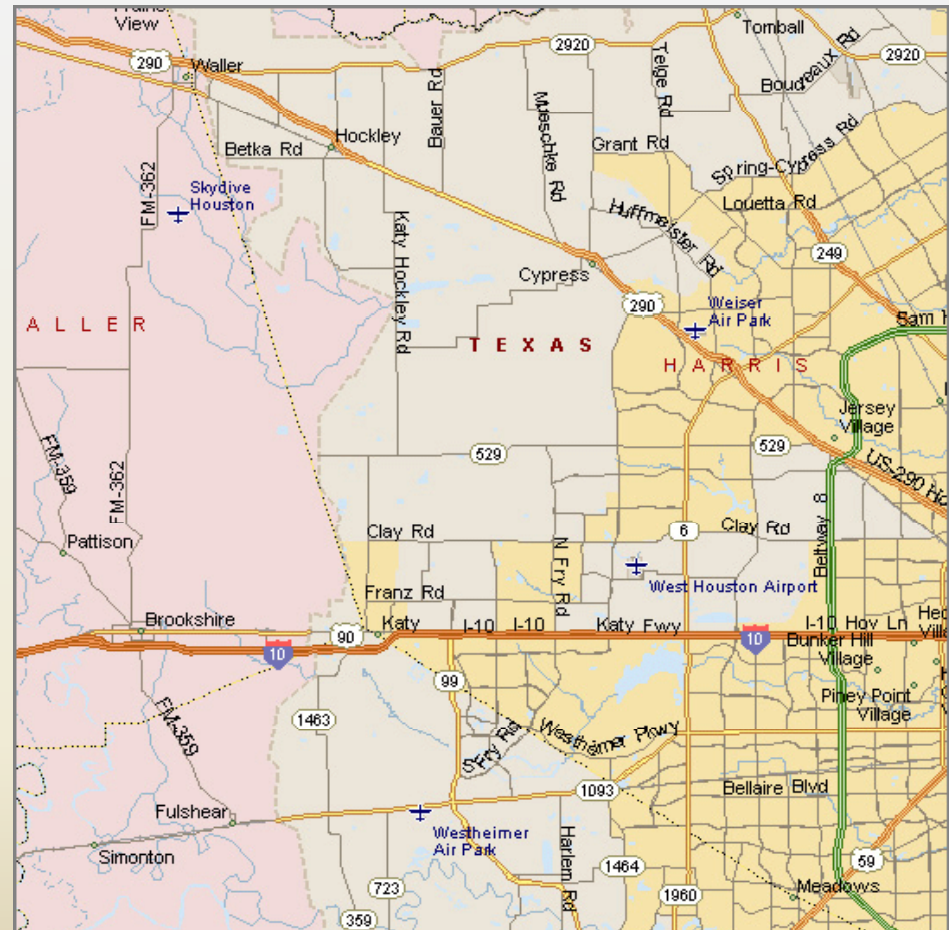


Greater West Houston Employment Growth to 2050



Governing Greater West Houston

- 40% City of Houston
- 60% COH ETJ
- 50% Harris
- 25% Fort Bend
- 25% Waller
- 10 Municipalities
- 15 School Districts
- 11 Special Purpose Dist.
- 200+ Utility Districts



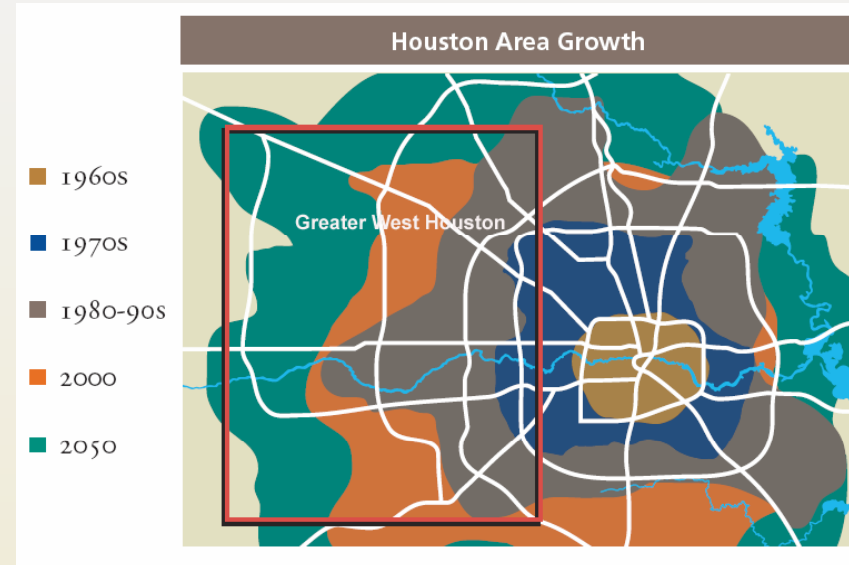
Goals of 2050 Plan

- Keeping Greater West Houston a Premier Place to Live, Work and Play
- Making Greater West Houston Better by Setting New Standards for Quality Growth
- Anticipating Infrastructure Needs



Growth is Certain

- Always Known & Accommodated Growth
- Continued Suburban Residential & Job Growth
- Strong Inner City Growth

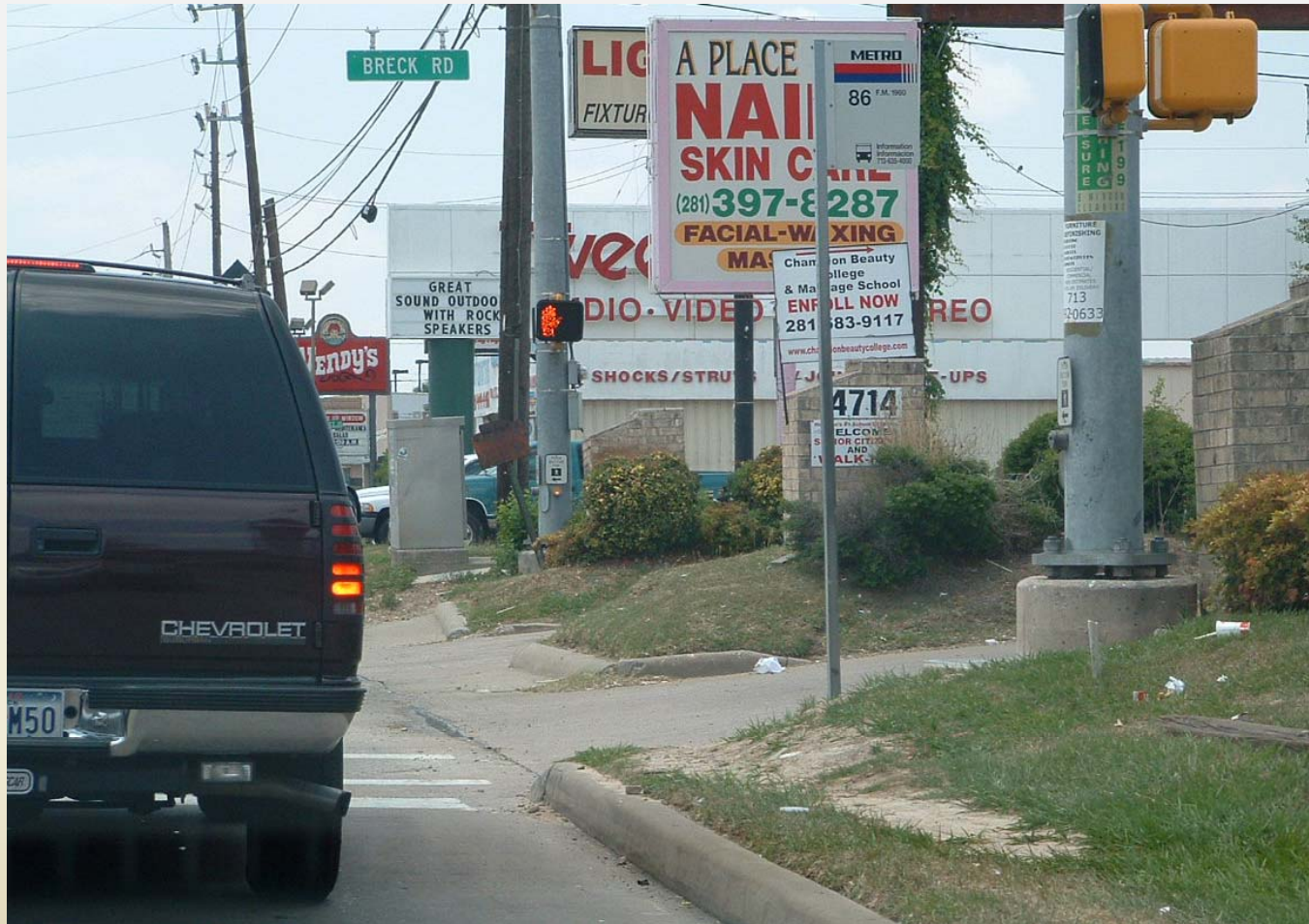


The Challenge: Quality Growth

- With Significant Growth our Challenge will be to Provide Quality Private & Public Sector Products



Illustration: Stressed System



A PROJECT OF THE WEST HOUSTON ASSOCIATION



WEST HOUSTON PLAN 2050.
Envisioning Greater West Houston at Mid-Century

Illustration: Quality System



A PROJECT OF THE WEST HOUSTON ASSOCIATION



WEST HOUSTON PLAN 2050.
Envisioning Greater West Houston at Mid-Century

Areas of Focus

- Transportation
- Drainage & Flood Control
- Water Supply & Wastewater Treatment
- Education
- Conservation & Open Space
- Quality Planned Communities
- Infrastructure Rehabilitation



Transportation

- Increased Circumferential Roadway Capacity
- Suburban to Suburban Work Trip Transit Access
- Plan and Implement High-Capacity Rapid Transit Access
- Plan Major Air Cargo Facility
- Advocate for Transportation Funding



Transportation

- US 290 Corridor
- Sam Houston Parkway
- Westpark Tollway
- Grand Parkway
- Prairie Parkway (Waller County)
- Lone Star Parkway (FM 529)



Transportation

- State Highway 6 “Super Street”
- Area-wide Computerized Signalization
- Expand Thoroughfare Rights of Way
- Add Express Streets
- High-capacity Rapid Transit
- Suburban Style Transit System



Water Supply & Wastewater

■ Challenges

- Equitable Distribution of Water Supply
- Potential New Source Beyond 2050
- Economics of Wastewater Regionalization

■ Opportunities

- Develop Consensus Between Public & Private Sectors on Adequacy of Water Distribution
- Efficiency & Cost Effectiveness of Regional Treatment



Drainage & Flood Control

- Expand “Frontier Channel” Concept
- Expand Detention Capacity of Barker & Addicks
- Joint use of Land for Conservation, Recreation & Detention
- City of Houston Dedicated Funding Source for Drainage System Rehabilitation



Education

- Retain Quality Education as Magnet for Growth
- Expand UH Cinco Ranch Programs
- Establish 4 Year, Graduate University
- Stronger Community College Presence
- Prepare ISDs for Rapid Growth



Conservation & Open Space

- Enhances Quality of Life/Quality Growth
- Anticipate Preservation Needs
 - Enhance Existing Urban Park System in Greater West Houston
 - Identify Additional Tracts for Conservation
 - Preserve Wooded Areas Adjacent Streams



Infrastructure Rehabilitation

- 90 Year Old Greater West Houston Infrastructure by Mid-Century
- Increased Maintenance & Rehabilitation Costs
- Shifting Government Responsibility
- Need Better System Information/Life-Cycle Focus
- Larger Amount of Dedicated Funding



Quality Planned Communities

■ Quality Growth Vision

- Master Planned Communities Critical to Sustaining Growth Model
- Environmentally & Aesthetically Pleasing
- Innovative, Unique Designs Responsive to Market Demands



Quality Planned Communities

- Master Planned Community Attributes to Smaller Residential Developments
 - Concepts and Standards
 - Demonstrate Benefits of Enhanced Standards for Smaller Development
- Homeowner Associations and Deed Restrictions for Continual Enforcement of Standards



Commercial Infrastructure

- Growth from Continued Suburbanization of Jobs
- 20% of Houston NRA is in Greater West Houston
- Corporate Employment Centers
 - Energy Corridor
 - Westchase
 - Memorial City/CityCentre



Commercial Infrastructure

- Maintain High Level of Access to Employment Centers
- Provide Utility/Infrastructure to These “Downtown-Equivalent” Centers
- Encourage “Town Centers” Style Development
- Apply Enhanced Standards to All Commercial Development



Follow-On Activities

- Committees of Public and Private Sectors
- Detailed Studies of Options
- Expanded Reports on Focus Areas
- Advocacy





WEST HOUSTON PLAN 2050®
Envisioning Greater West Houston at Mid-Century

West Houston Plan 2050 Envisioning Greater West Houston at Mid-Century

A COMMUNITY CONVERSATION ABOUT GROWTH

