

2010

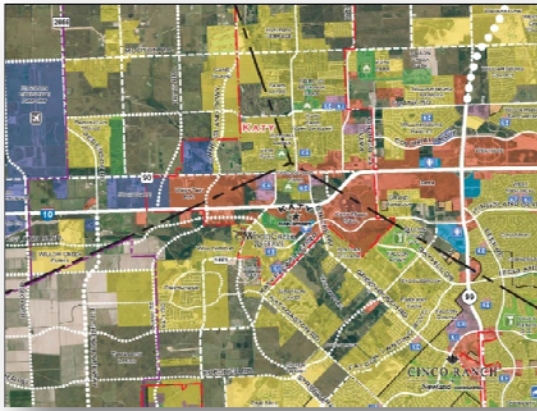
# WEST HOUSTON DEVELOPMENT MAP Member Order Form

USE THIS FORM TO ORDER ADDITIONAL  
COPIES AND VERSIONS OF THE 2010 MAPS

## ■ Order an Aerial Map Large and Order Additional Large & Small Maps

The West Houston Association is proud to announce the release and distribution of the 2010 West Houston Development Map, in a larger size, covering more land area, with a new color aerial and with the same iconic land use colorations we pioneered showing land uses in the 1,000 square mile Greater West Houston area.

Every West Houston Association Member firm<sup>1</sup> will receive a copy of the Development Map in February. Deliveries will begin February 22<sup>nd</sup>.



Development Map Sample 1

- The **Development Map** is available in both a large 50" x 42" wall mount size and a smaller 25 x 21" size convenient for carrying with you. Both versions of the Development Map will be printed on glossy paper.
- The Association is also making available the **Aerial Map** in both the wall mountable and smaller sizes. This version has the same attributes as the Development Map except it does not have the commercial and residential land use coloration.

<sup>1</sup> Member Firm must be current on investment dues and any outstanding invoices.

*Use this form to order additional copies & sizes of any of the versions in any quantity you like at a special prepublication reduced price, if you order before Friday, February 12<sup>th</sup>:*

Qty	Description	Price	Ext
	Development Maps Large	\$40 ea	
	Development Maps Small	\$15 ea	
	Aerial Maps Large	\$40 ea	
	Aerial Maps Small	\$15 ea	
Jurisdictional Maps:			
	County Commissioners	\$15 ea	
	State Senators	\$15 ea	
	Congressional	\$15 ea	
	Municipal	\$15 ea	
	School Districts	\$15 ea	
	Sales Tax	x 8.25%	
	Shipping		\$10.00

**Total Due**  
MOUNTING OPTION AVAILABLE; CALL BEFORE FEB. 12<sup>TH</sup>.  
In order to receive the preprint discount on your order, the Association must have your payment or commitment to pay prior to February 12<sup>th</sup>.

### Authorization & Commitment to Pay

Name of Authorizing Company Agent

Company Name

Phone Number

Email

Return to Fax 713.461.3065 email [Lnelson@westhouston.org](mailto:Lnelson@westhouston.org) no later than Friday, February 12<sup>th</sup>. We do not accept credit cards.

- **This is a special prepublication price only for Members of the Association. After February 12<sup>th</sup> the large maps will be \$80 and the small map, \$20. Non-Member prices are \$125 for large maps and \$50 small.**