

THE ENVISION™ RATING SYSTEM



A New Fact of Life...

It is no longer enough that infrastructure work, that it be constructed on time and within budget...or even that it last...it now must be **SUSTAINABLE**.

We are not without tools to guide us...

There are our

- Best Practices
- Statutes and Regulations
- Science and Technology
- Community values and priorities

And there is ENVISION™



Envision™ was developed in joint collaboration between the Zofnass Program for Sustainable Infrastructure at the Harvard University Graduate School of Design and the Institute for Sustainable Infrastructure.



The Institute for Sustainable Infrastructure is a not-for-profit education and research organization founded by the American Public Works Association, the American Council of Engineering Companies and the American Society of Civil Engineers.

WHAT IS ENVISION™?

Envision™ is a tool, which itself is part of a larger system, developed to help evaluate the sustainability of civil infrastructure.

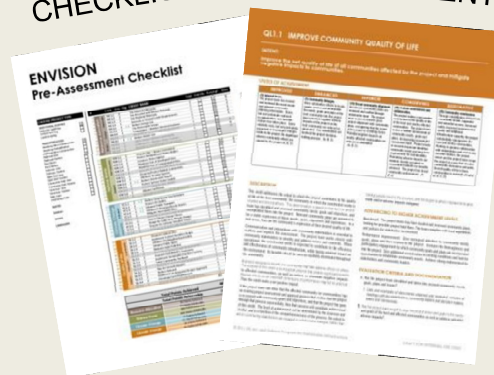
This system includes:

- A self assessment checklist
- The Envision™ Rating Tool
- A credential program for individuals
- A Project Evaluation and Verification Program
- A Recognition Program for Sustainable Infrastructure

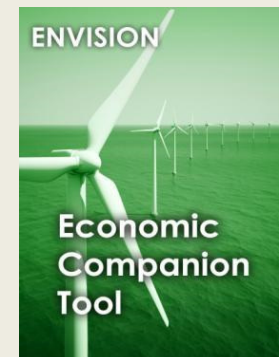
PHASE TOOLKITS



PRE-ASSESSMENT CHECKLIST



COMPANION TOOLS



WHAT MAKES ENVISION™ UNIQUE?

- It applies to civil infrastructure
- It includes design, planning, construction and maintenance elements
- It is applicable at any point in an infrastructure project's life cycle
- It speaks to the triple bottom line: social, economic and environmental goals
- It is designed to keep pace with a changing concept of sustainability

WHAT MAKES ENVISION™ UNIQUE?

- It applies to civil infrastructure
- It includes design, planning, construction and maintenance elements
- It is applicable at any point in an infrastructure project's life cycle
- It speaks to the triple bottom line: social, economic and environmental goals
- It is designed to keep pace with a changing concept of sustainability

WHAT TYPES OF INFRASTRUCTURE CAN ENVISION™ RATE?



ENERGY

Geothermal
Hydroelectric
Nuclear
Coal
Natural Gas
Oil/Refinery
Wind
Solar
Biomass



WATER

Potable water
distribution
Capture/Storage
Water Reuse
Storm Water
Management
Flood Control



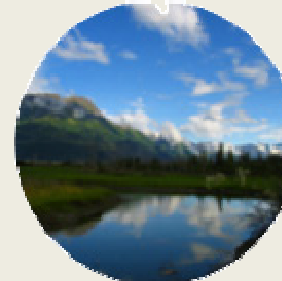
WASTE

Solid waste
Recycling
Hazardous
Waste
Collection &
Transfer



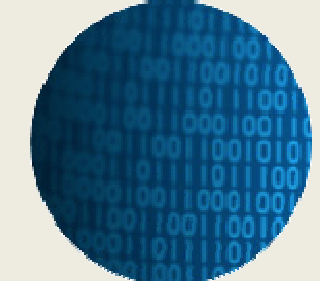
TRANSPORT

Airports
Roads
Highways
Bikes
Pedestrians
Railways
Public Transit
Ports
Waterways



LANDSCAPE INFORMATION

Public Realm
Parks
Ecosystem
Services



Telecommunications
Internet
Phones
Satellites
Data Centers
Sensors

CATEGORIES



1 PURPOSE

- QL1.1 Improve Community Quality of Life
- QL1.2 Stimulate Sustainable Growth & Development
- QL1.3 Develop Local Skills & Capabilities

2 WELLBEING

- QL2.1 Enhance Public Health & Safety
- QL2.2 Minimize Noise and Vibration
- QL2.3 Minimize Light Pollution
- QL2.4 Improve Community Mobility & Access
- QL2.5 Encourage Alternative Modes of Transportation
- QL2.6 Improve Accessibility, Safety, & Wayfinding

3 COMMUNITY

- QL3.1 Preserve Historic & Cultural Resources
- QL3.2 Preserve Views & Local Character
- QL3.3 Enhance Public Space
- QL0.0 Innovate or Exceed Credit Requirements



1 COLLABORATION

- LD1.1 Provide Effective Leadership & Commitment
- LD1.2 Establish A Sustainability Management System
- LD1.3 Foster Collaboration & Teamwork
- LD1.4 Provide for Stakeholder Involvement

2 MANAGEMENT

- LD2.1 Pursue By-Product Synergy Opportunities
- LD2.2 Improve Infrastructure Integration

3 PLANNING

- LD3.1 Plan For Long-Term Monitoring & Maintenance
- LD3.2 Address Conflicting Regulations & Policies
- LD3.3 Extend Useful Life
- LD0.0 Innovate or Exceed Credit Requirements



1 MATERIALS

- RA1.1 Reduce Net Embodied Energy
- RA1.2 Support Sustainable Procurement Practices
- RA1.3 Use Recycled Materials
- RA1.4 Use Regional Materials
- RA1.5 Divert Waste From Landfills
- RA1.6 Reduce Excavated Materials Taken Off Site
- RA1.7 Provide For Deconstruction & Recycling

2 ENERGY

- RA2.1 Reduce Energy Consumption
- RA2.2 Use Renewable Energy
- RA2.3 Commission & Monitor Energy Systems

3 WATER

- RA3.1 Protect Fresh Water Availability
- RA3.2 Reduce Potable Water Consumption
- RA3.3 Monitor Water Systems
- RA0.0 Innovate or Exceed Credit Requirements



1 SITING

- NW1.1 Preserve Prime Habitat
- NW1.2 Protect Wetlands & Surface Water
- NW1.3 Preserve Prime Farmland
- NW1.4 Avoid Adverse Geology
- NW1.5 Preserve Floodplain Functions
- NW1.6 Avoid Unsuitable Development on Steep Slopes
- NW1.7 Preserve Greenfields

2 LAND+WATER

- NW2.1 Manage Stormwater
- NW2.2 Reduce Pesticide & Fertilizer Impacts
- NW2.3 Prevent Surface & Groundwater Contamination

3 BIODIVERSITY

- NW3.1 Preserve Species Biodiversity
- NW3.2 Control Invasive Species
- NW3.3 Restore Disturbed Soils
- NW3.4 Maintain Wetland & Surface Water Functions
- NW0.0 Innovate or Exceed Credit Requirements



1 EMISSIONS

- CR1.1 Reduce Greenhouse Gas Emissions
- CR1.2 Reduce Air Pollutant Emissions

2 RESILIENCE

- CR2.1 Assess Climate Threat
- CR2.2 Avoid Traps & Vulnerabilities
- CR2.3 Prepare For Long-Term Adaptability
- CR2.4 Prepare For Short-Term Hazards
- CR2.5 Manage Heat Island Effects
- CR0.0 Innovate or Exceed Credit Requirement

FOR MORE
INFORMATION
ABOUT **ENVISION™**

sustainableinfrastructure.org

Bill Bertera, Executive Director
bertera@sustainableinfrastructure.org
(202) 218-6725

